

# One Click Casting

## OnCollab AT-C/AT-H Lite Quick Start Guide

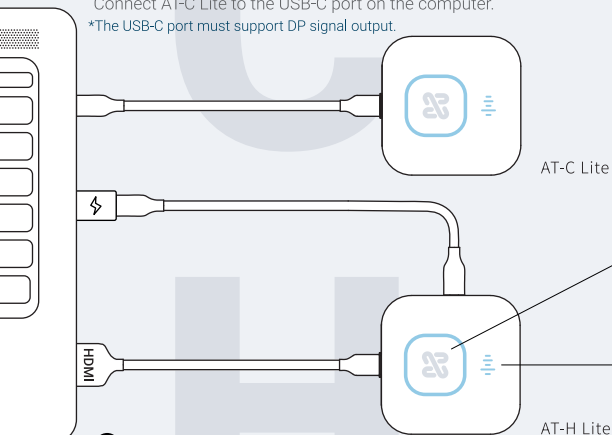
AVAOCATQSG V1.0  
82445-00070-33021-G

### • Connections and Indicators

#### **C** USB-C Connections

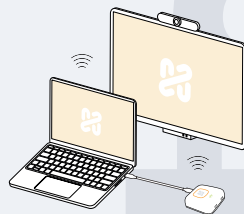
Connect AT-C Lite to the USB-C port on the computer.

\*The USB-C port must support DP signal output.



#### **H** HDMI & USB-A Connections

Connect AT-H Lite to the HDMI & USB-A port on the computer or another power source.



#### **1** Large Button - Projection

Display the status of the projection function.  
Press lightly to start/stop projection.

#### **2** Small Button - Pause projection

Press it lightly to pause projection and freeze the screen.



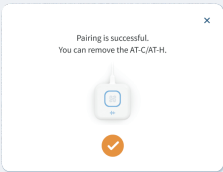
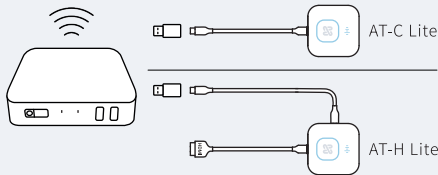
AVA Web  
<https://narvitech.com/ava>  
Copyright eMPIA Technology Corp.



OnCollab AT-C/AT-H Lite  
Product Registration

When using the AT-C/AT-H Lite for the first time, please pair the unit with your OnCollab device.

● Pairing



❶ USB 3.0 Connections

Connect the AT-C/AT-H Lite to the USB 3.0 port of the OnCollab device. The device will enter pairing mode.

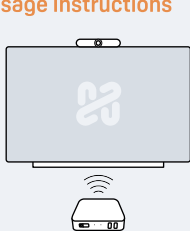
❷ Enter the Wifi password

After entering the password, the device will start pairing.

❸ Pairing Successful

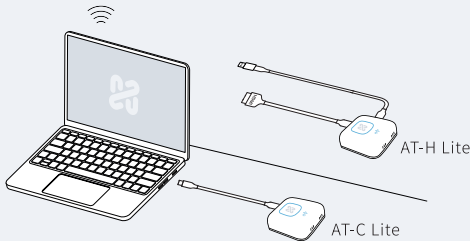
When the device has successfully paired, unplug the AT-C/AT-H Lite.

● Usage Instructions



❶ Setup your OnCollab Device

Turn on and setup the OnCollab Device that has been paired with AT-C/AT-H Lite.



❷ USB-C/HDMI Connections

Connect the AT-C Lite to the USB-C port.  
Connect the AT-H Lite to the HDMI & USB port.



❸ Wait for the Light Indicator

Wait until the large button emit a constant blue light before using it.

● LED Indicators

❶ Large Button - Projection

● Blue ☀ Constant Light

Standby, ready for projection.

● Orange 📶 Pulsing Light

Projection in progress.

● Orange ✨ Blinking Light

Moderator Control Activated.

❷ Small Button - Video Conference

● Blue ☀ Constant Light

Standby.

● Orange ☀ Constant Light

Pause after projection.

❸ Small and Large Button - Other Status

● Blue 📶 Pulsing Light

Establishing connection with Wi-Fi.

● Blue ✨ Blinking Light

Searching for OnCollab devices.

● Yellow ✨ Blinking Light

No audio/video output from the computer's USB-C/HDMI port.

\*If the connection cannot be established continuously, please check the network is normal or the password is entered correctly during pairing.

\*If OnCollab devices cannot be found continuously, please check if the OnCollab device is connected to the correct network or repair it.