



User Manual

NS110

HD60 Pro

Content

How to live stream via Screen Recorder 4 with NS110	3
Download and install	3
Setting	4
Start streaming	6
Start recording	8
How to live stream via OBS with NS110	9
Download and install	9
Setting	10
Start streaming	13
Start recording	15
Statement	16
Get assistance	17

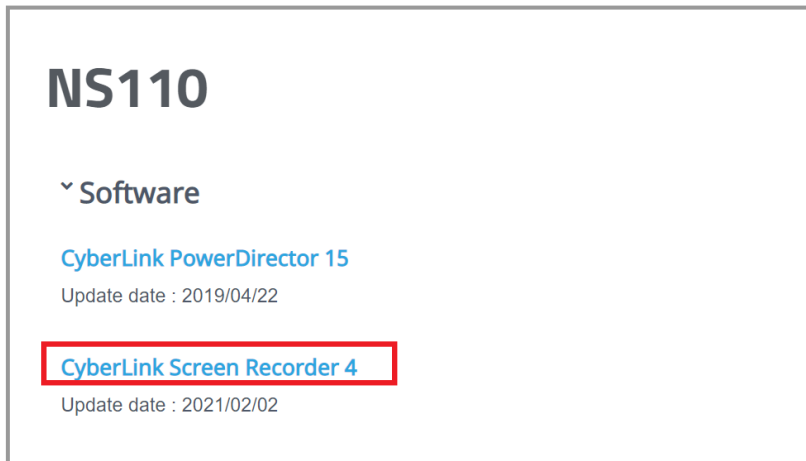
How to live stream via Screen Recorder 4 using NS110

Screen Recorder 4 that comes with the NS110 is a feature-rich, easy-to-use live streaming software. Before starting to use the software provided, please be sure to complete the connection process section of the Quick Start Guide.

1. The software only supports Windows 10, 8.1, 7 SP1 (Windows 10 64-bit is recommended)
2. The NS110 package only provides the software serial number, and not the software CD.
3. The accompanying Screen Recorder 4 cannot be updated with the official version of Cyberlink.

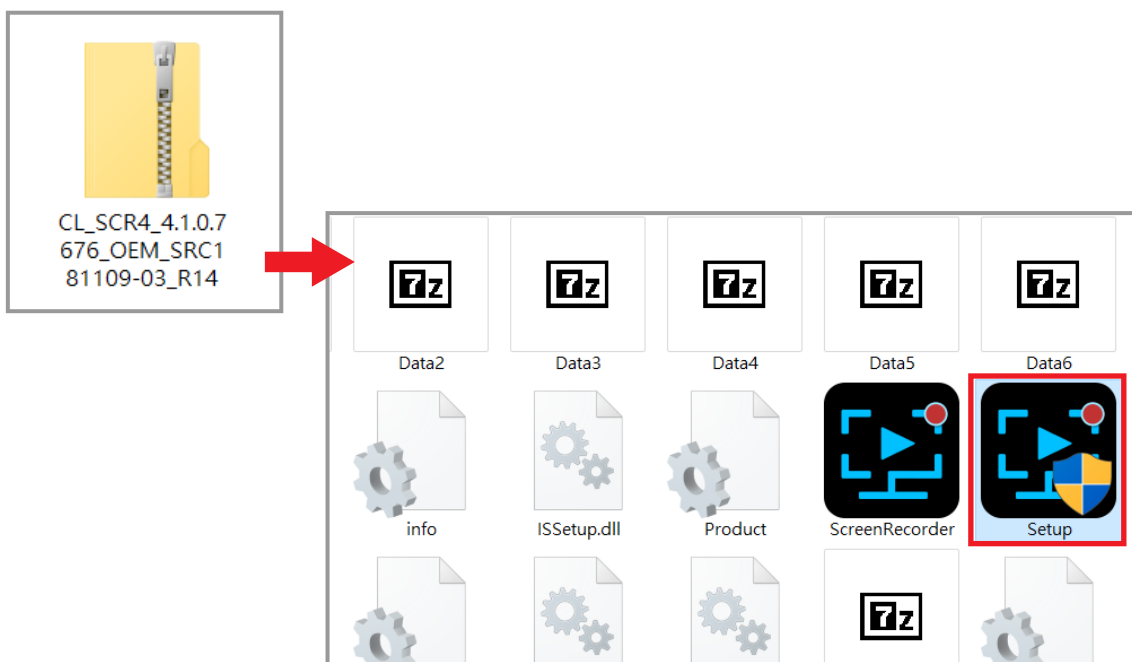
Downloading and Installation

First, go to Narvitech's official website, and then open the menu on the top right corner. Go to [Support] > [Download] > [NS110] > [Software], and click on Cyberlink Screen Recorder 4 to download the application.

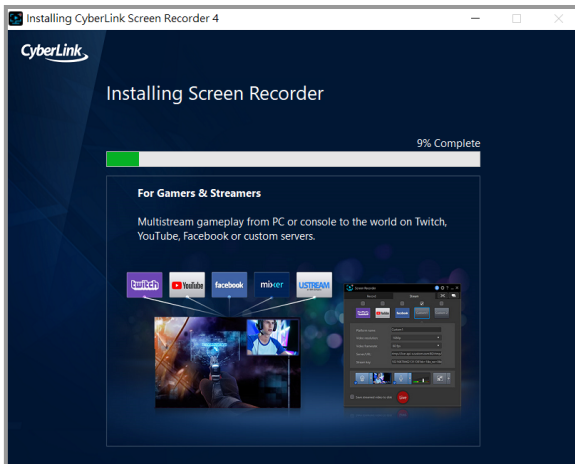


After entering the page, scroll up to NS110 to see the

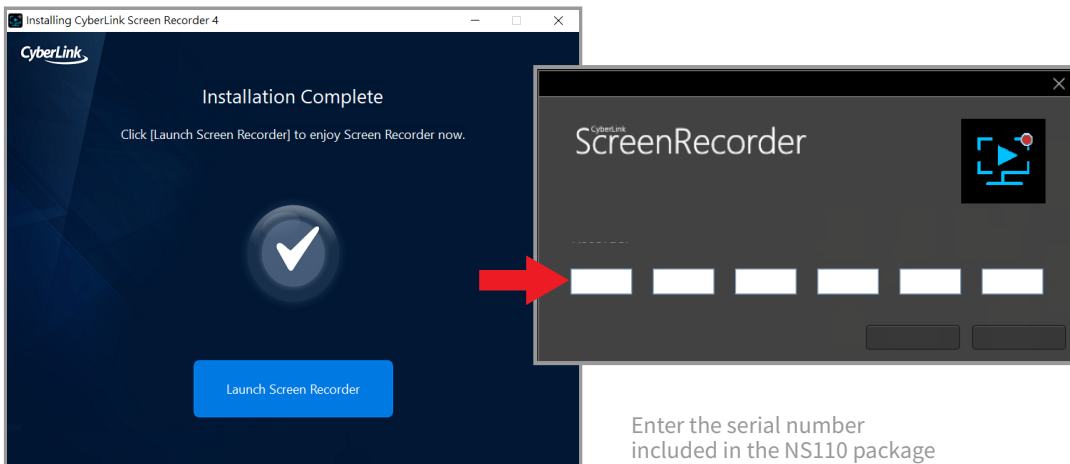
Once the download is complete, extract the file and click on the folder to open the "Setup" application.



Open the program, select the language and storage location, and then start the installation.



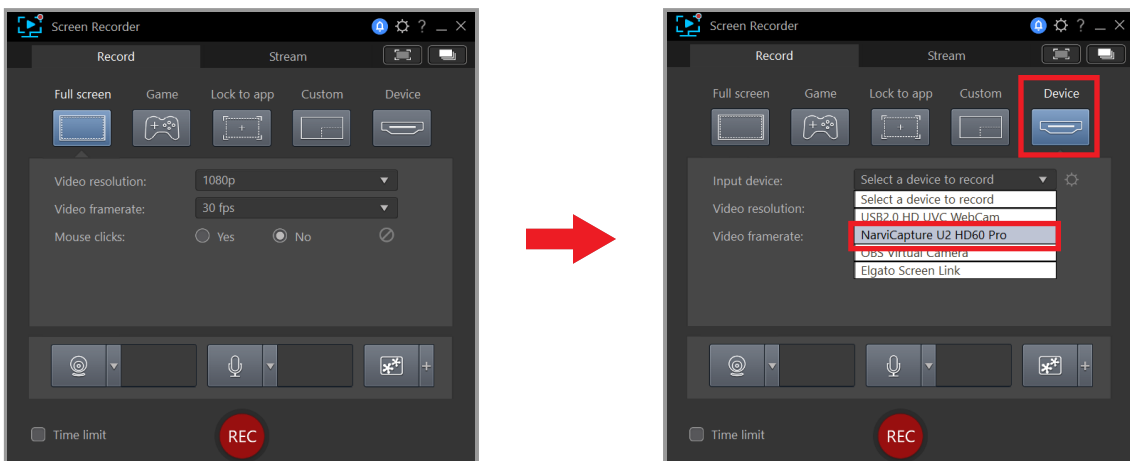
After the installation is completed, enter the serial number to activate the program.



Enter the serial number included in the NS110 package

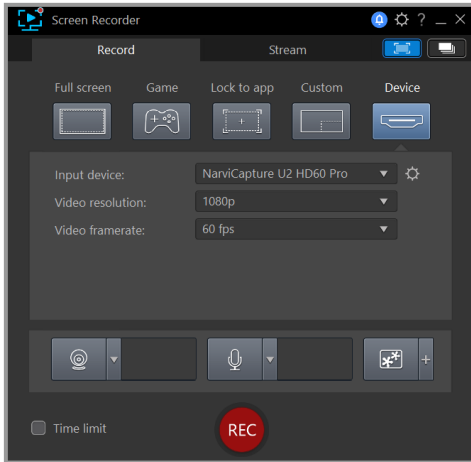
Setting

After the installation is completed and the serial number is entered, open Screen Recorder 4 to view the interface as shown below, then click [Device] > [Input Device] > [NarviCapture U2 HD60 Pro]

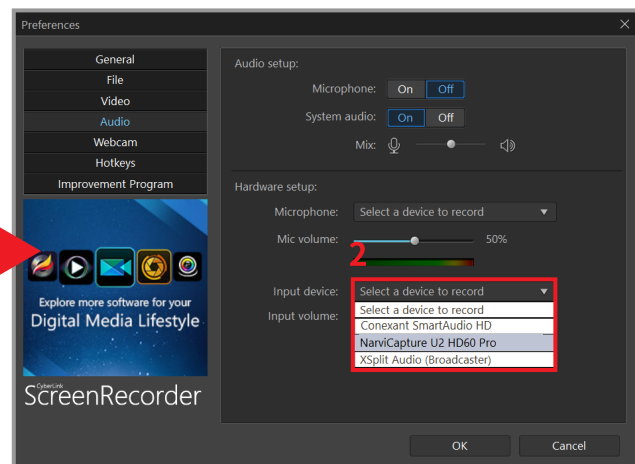
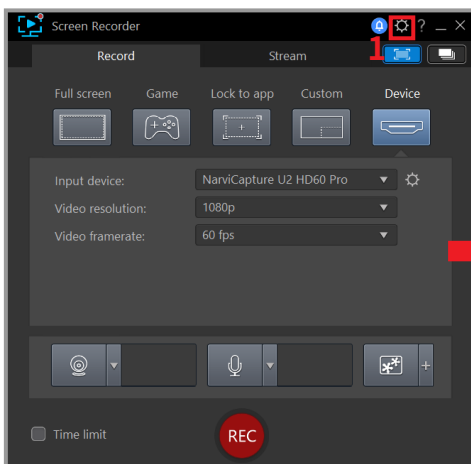


After selecting the input device, a preview screen will appear.

1. When recording or live streaming, please mute the preview volume in order to avoid errors.
2. To remove the camera UI elements on the preview screen, you will need to find a solution for your device. (Keyword: Clean HDMI)



To set the audio volume, click on the top right corner 1. [Gear Icon] > [Audio] > 2. [Input Device: Microphone (NarvitCapture U2 HD60 Pro)]



After the volume is set, you are ready to broadcast!

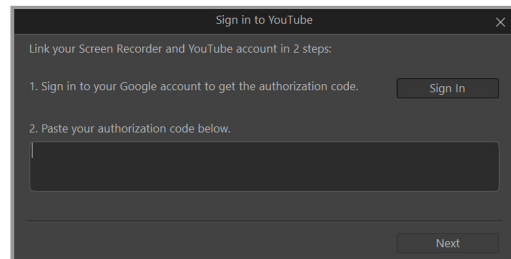
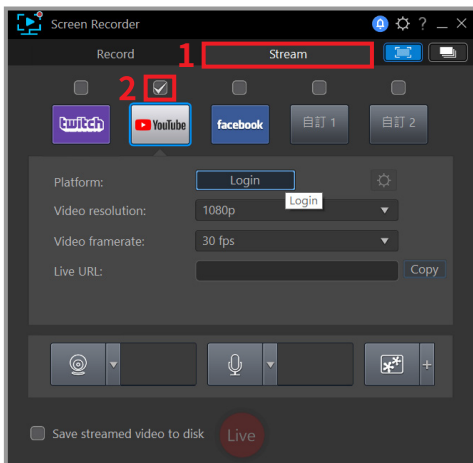
1. Before starting the actual recording or live streaming, please try the preview volume control on the upper right of the preview screen in order to test the volume.

Start streaming

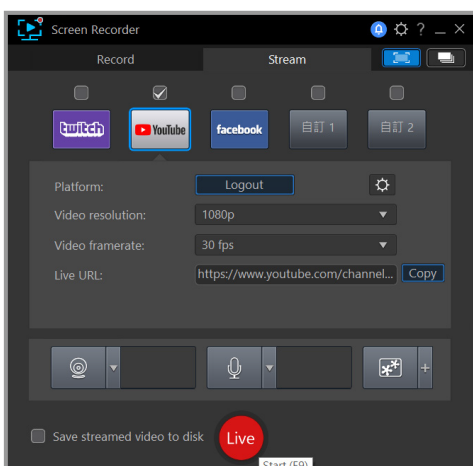
Once the hardware connections and software settings are completed, you're ready to go live. Please be sure to test before the live broadcast (e.g. create a separate account for live testing) in order to ensure that the resolution, volume, and quality of the live broadcast are set to your standards.

1. To livestream on Youtube, your account must be activated first.
2. Youtube activation process: [Youtube homepage] > [camera icon on the top right corner of the page] > [Go Live], verify a working phone number and wait for 24 hours to activate an account.
3. Facebook Live only supports streaming resolutions up to 720p.
4. If you want to go live on other platforms, you will need to enter the URL and streaming key.
5. You can go live on multiple platforms simultaneously.

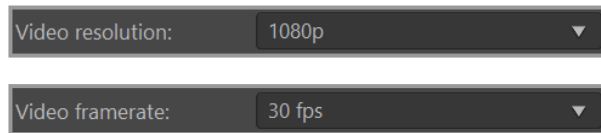
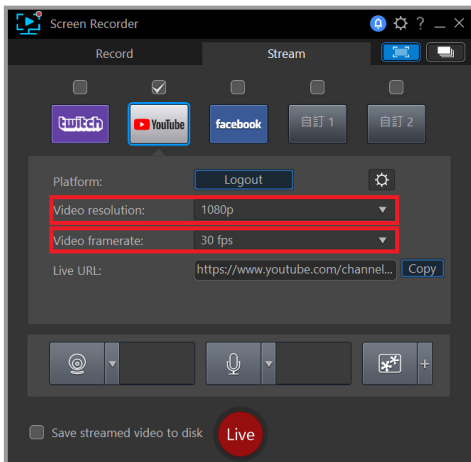
First, click on the Stream Button and choose one of the streaming platforms of Twitch, Youtube, Facebook. After selecting, follow the instructions below to begin going live. The example below will be shown using Youtube as a streaming platform.



If your login is successful, you will be able to see the screen below.



Before pressing "Live", you can adjust the resolution and frame rate of the live video highlighted in the red frame. It is recommended that you have at least 15Mbps of upload bandwidth for live streaming at 1080p (you can test your internet speed through Google Fiber)

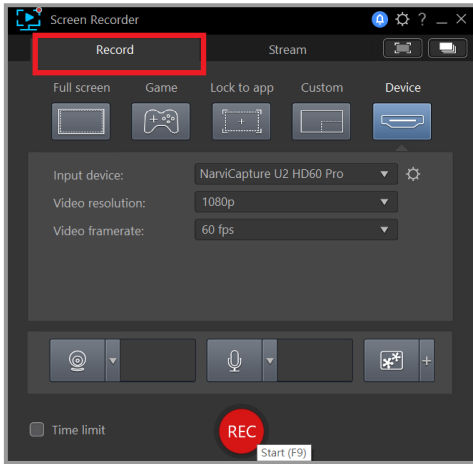


After pressing "Live" at the end, you can begin your wonderful streaming journey!

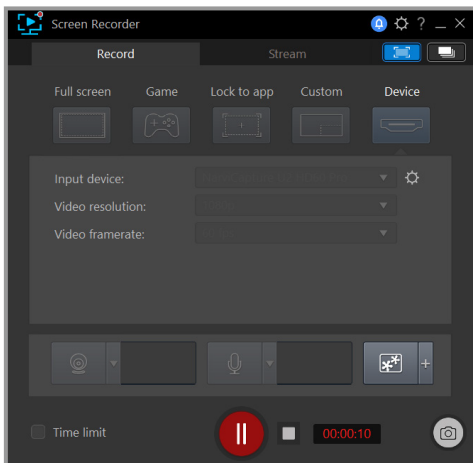
For more information on the additional features of Screen Recorder 4, you can read the full version of Screen Recorder 4 User Manual Path hosted in our website: Go to Narvitech Website > [Support] > [Download] > [NS110] > [Document] > [User Manual]

Start recording

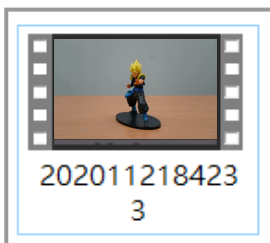
First, click on the “Record” button in the upper left corner, then adjust the video resolution and frame rate according to your personal preferences. After adjusting, press "REC" to start recording.



To pause recording press the red button on the bottom center of the screen; to end recording press the F9 button.



After the recording has ended, the application will automatically place the recorded video in the video folder, where you can edit the file at your leisure.



How to live stream via OBS with NS110

OBS is widely known as a powerful and completely free live streaming software. However, it is rather difficult to get started with OBS. In addition, there is no complete set of "user manuals", and there are no professional technical team on standby to help. Therefore, only fragmented tutorials on how to start with OBS can be found on the Internet.

1. This instruction only introduces how to live stream via OBS with NS110. For other functions of OBS, please refer to various guides on the internet.
2. OBS supports both Windows10 and MacOS.

Download and install

First, go to the OBS official website, click on the corresponding operating system and start the download.

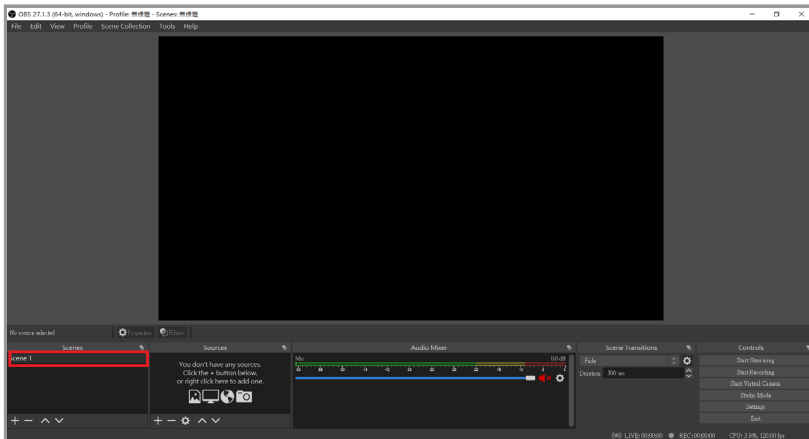


Open the downloaded file to install OBS.

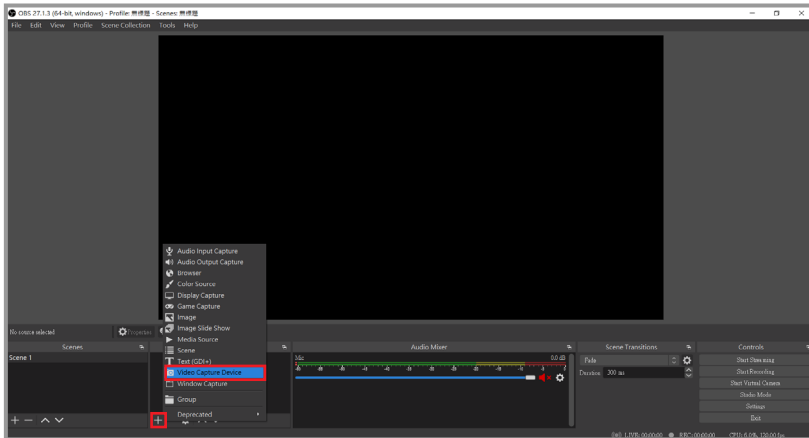


Setting

After opening OBS, first select “scene” in the bottom left corner. You can create multiple sets of scenes if you want to play multiple sets of videos or live content.

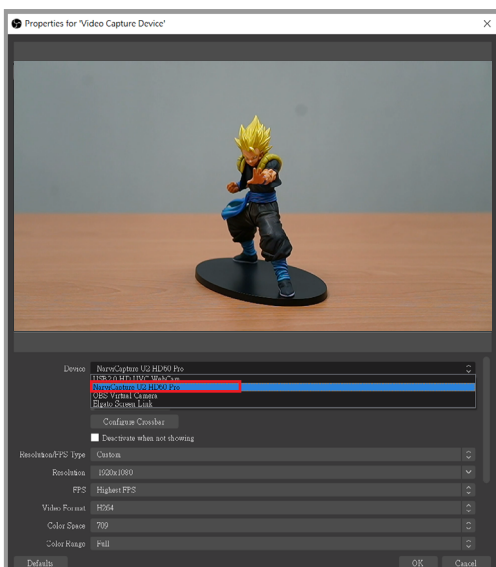


Then click [Plus button in the red frame] > [Video capture device] > [Set source name] > [OK].

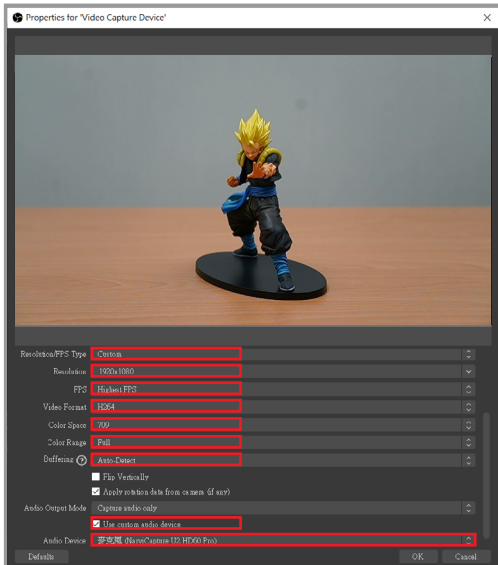


Select "NarviCapture U2 HD60 Pro" under "Device" in the window

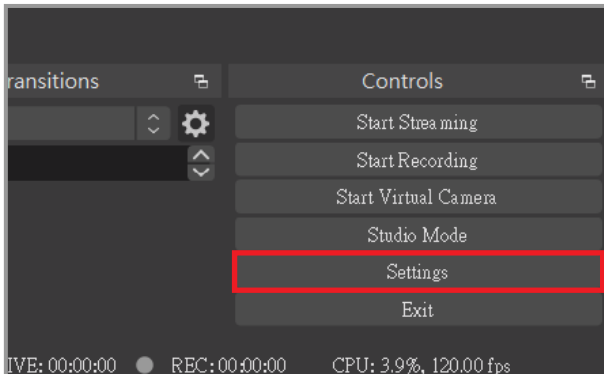
1. To remove the camera UI elements on the preview screen, you will need to find a solution for your device. (Keyword: Clean HDMI).



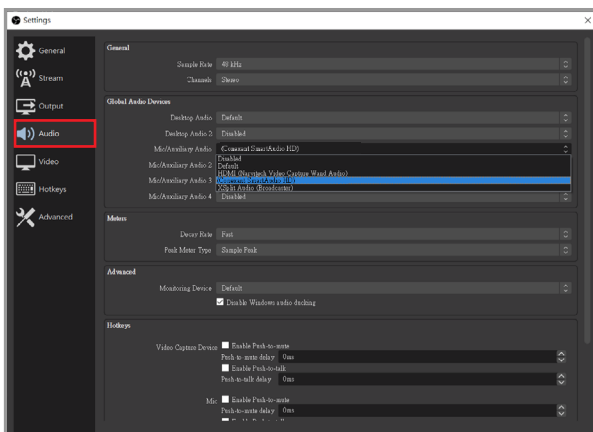
Scroll down in order to change the Resolution/FPS Type to Custom, and then adjust the resolution according to your personal preferences. Afterwards tick the "Use custom audio device" option and the audio device option should appear below, select "Digital Audio Interface" and set it to (NarviCapture U2 HD Pro Audio).



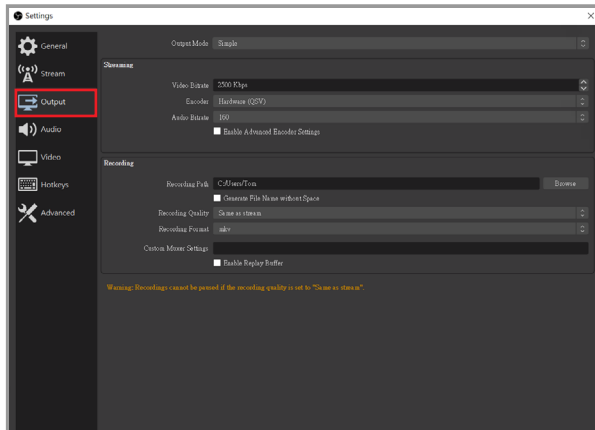
After that, go back to the main screen and click "Settings" in the bottom right corner.



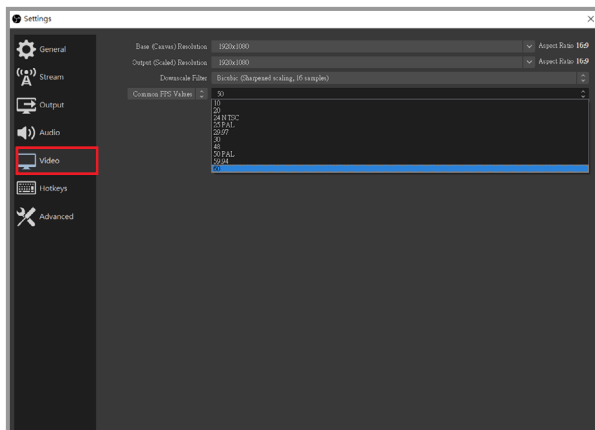
Click on "Audio" in the menu on the left. The desktop audio is the audio source of the PC, and the microphone/auxiliary is the audio source of the external device.



Click "Output" in the menu on the left, here it is recommended to set the bit rate to 2000~2500 Kbps. Increasing the bit rate will affect the CPU performance and network



Click "Video" in the menu on the left, and you can adjust the output resolution of the live image according to your personal preferences (default: 720p). It is recommended that you have at least 15Mbps of upload bandwidth for live streaming at 1080p (you can test your internet speed through Google Fiber).

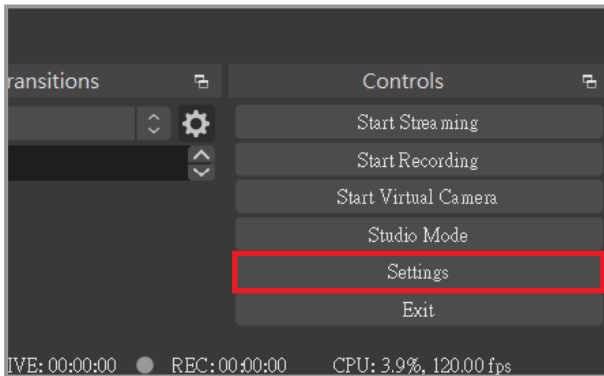


Start streaming

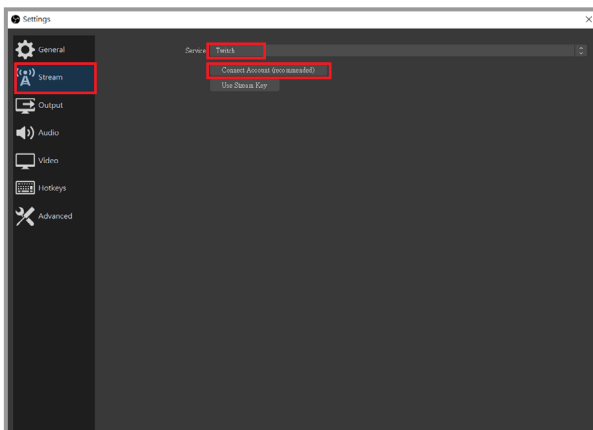
Once the hardware connections and software settings are completed, you're ready to go live. Please be sure to test before the live broadcast (for example: create a separate account for live testing) in order to ensure that the resolution, volume, and quality of the live broadcast are set to your standards.

1. To go live on Youtube, your account must be activated first.
2. Youtube activation process: [Youtube homepage] > [camera icon on the top right corner of the page] > [Go Live], verify a working phone number and wait for 24 hours to activate an account.
3. Facebook Live only supports streaming resolutions up to 720p.

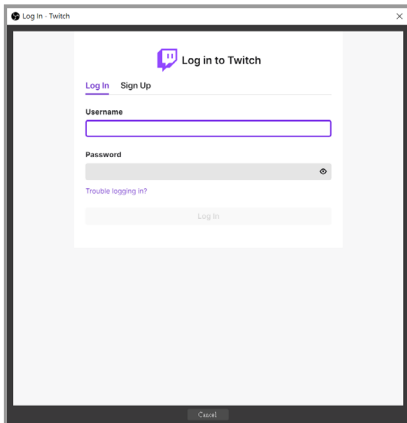
First click "Settings" in the bottom right corner of the main screen.



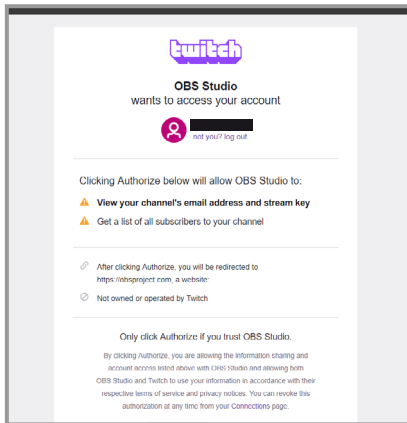
Click "Stream" in the menu on the left, and select the platform you want to stream on. The example below will be shown using Twitch as a streaming platform. Click on the "Connect Account" button in order to link your Twitch account.



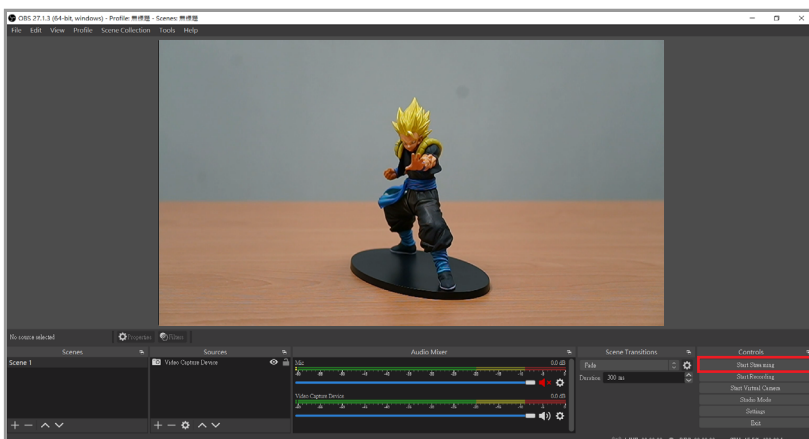
After entering your Twitch account and password, the system will automatically send a verification code to your email.



After inputting the verification code, please agree to the authorization

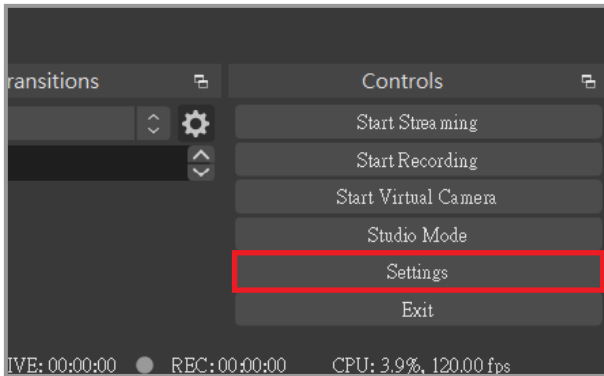


Finally, click on "Start Streaming" in the bottom right corner, and you can begin your wonderful streaming journey!

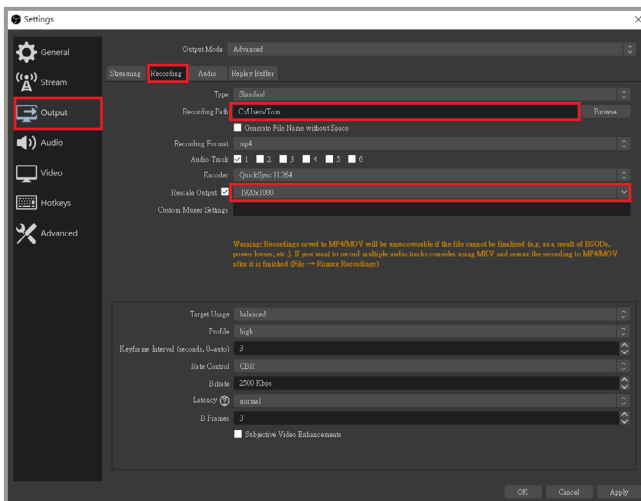


Start recording

First click "Settings" in the lower right corner of the main screen.

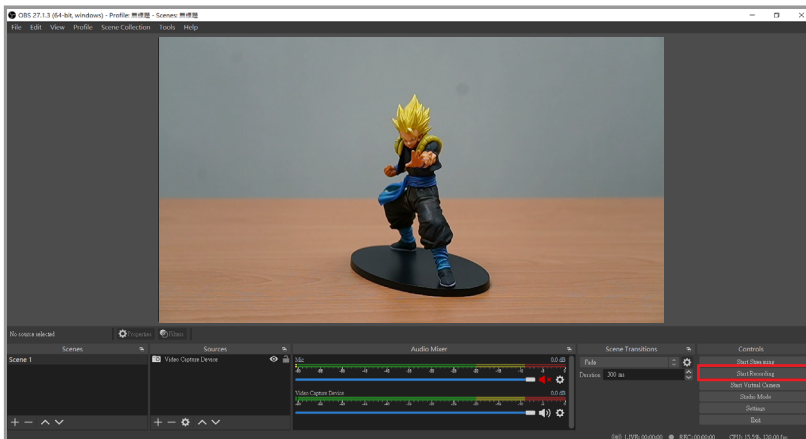


Click "Output" in the menu on the left, and then click browse to adjust the recording path after recording.



After you have finished setting, close the window and save the changes made when prompted.

Finally, click "Start Recording" in the bottom right corner to start recording!



Statement

FC Federal Communications Commission

This equipment has been tested and found to comply with the limits for a Class B digital device, pursuant to part 15 of the FCC Rules. These limits are designed to provide reasonable protection against harmful interference in a residential installation. This equipment generates, uses and can radiate radio frequency energy and, if not installed and used in accordance with the instructions, may cause harmful interference to radio communications. However, there is no guarantee that interference will not occur in a particular installation. If this equipment does cause harmful interference to radio or television reception, which can be determined by turning the equipment off and on, the user is encouraged to try to correct the interference by one or more of the following measures:

- * **Reorient or relocate the receiving antenna.**
- * **Increase the separation between the equipment and receiver.**
- * **Connect the equipment into an outlet on a circuit different from that to which the receiver is connected.**
- * **Consult the dealer or an experienced radio/ TV technician for help.**

CAUTION:

This device complies with Part 15 of the FCC Rules. Operation is subject to the following two conditions: (1) this device may not cause harmful interference, and (2) this device must accept any interference received, including interference that may cause undesired operation.



Disposal of Waste of Electrical and Electronic Equipment Within the European Union

The mark of crossed-out wheeled bin indicates that this product must not be disposed of with your other household waste. Instead, you need to dispose of the waste equipment by handing it over to a designated collection point for the recycling of waste electrical and electronic equipment. For more information about where you can drop off your waste equipment for recycling, please contact your local city recycling office or the dealer from whom you purchased the product.

Get assistance

Support

You can go to Narvitech's official website for the latest updates on the product and also support information.

Official website: <https://Narivtech.com>

Support page: <https://narvitech.com/home/support-center/>

Contact Us

You can also contact us via the following information, so we can provide the assistance you need.

Contact us on: <https://narvitech.com/home/contact-us-2/>

E-mail: Supprot@Narvitech.com

Blog

You can visit Narvitech's Blog to find out more information and resource.